

Since 1986



The Ultimate Crushing Solution

## VERTICAL SHAFT IMPACTORS



VSI's - Mobile / Skid Mounted  
Crushing with Screening Stations



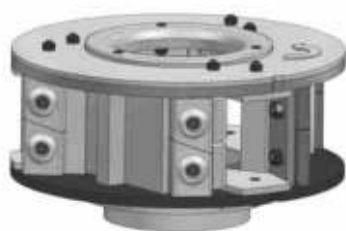
# VERTICAL SHAFT IMPACTOR

SMAN Brand VSI's are the ultimate solution for tertiary stage crushing to achieve cubical shaped aggregates and artificial sand from hard rock's ores and minerals.

Designed as per the most advanced crushing techniques, the outer shell and other body components are fabricated out of finest quality mild steel plates. The bearing cartridge is made out of High Quality Steel Casting and a robust design helps to withstand high input loads. The main shaft is precision machined out of high grade forged alloy steel. The rotor is fabricated out of high Quality abrasion resisting plates, further precision machined and dynamically balanced for higher rpm. High chrome casted wear liners for the rotor last longer reducing maintenance .



SMAN VSI are also available with optional modular design heavy duty mobile or stationary Skids along with suitable vibratory Screens and discharge Conveyor mounted on the same unit, however standard scope of supply includes Structural Skid with mounting Legs, vibration cut off sensor, Multi Line greasing unit, Hydraulic jack for lifting top cover and maintenance access platform.



## Rotor Assembly

Rotor assembly includes carbide tips & high chrome liners



## Automatic Electric Greasing

Automatic electric controlled Greasing unit with timer setting for trouble free lubrication.

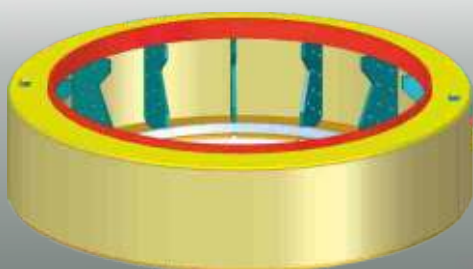


## Vibration Sensor

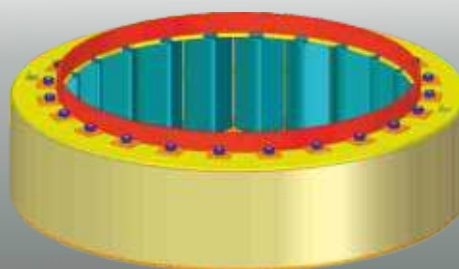
Vibration sensor with auto shutdown to ensure perfect balancing of the rotor assembly while in operation.

## Simplified Retro Fitment from Rock on Rock to Rock on metal

Rock on Rock to Rock on metal version can be easily converted by offering anvil Rings & Rocks chamber combination which results in higher product yield. This simplified Retro Fit can be easily & Quickly installed on existing Rock on Rock model without changing the complete machine resulting in differing product needs.

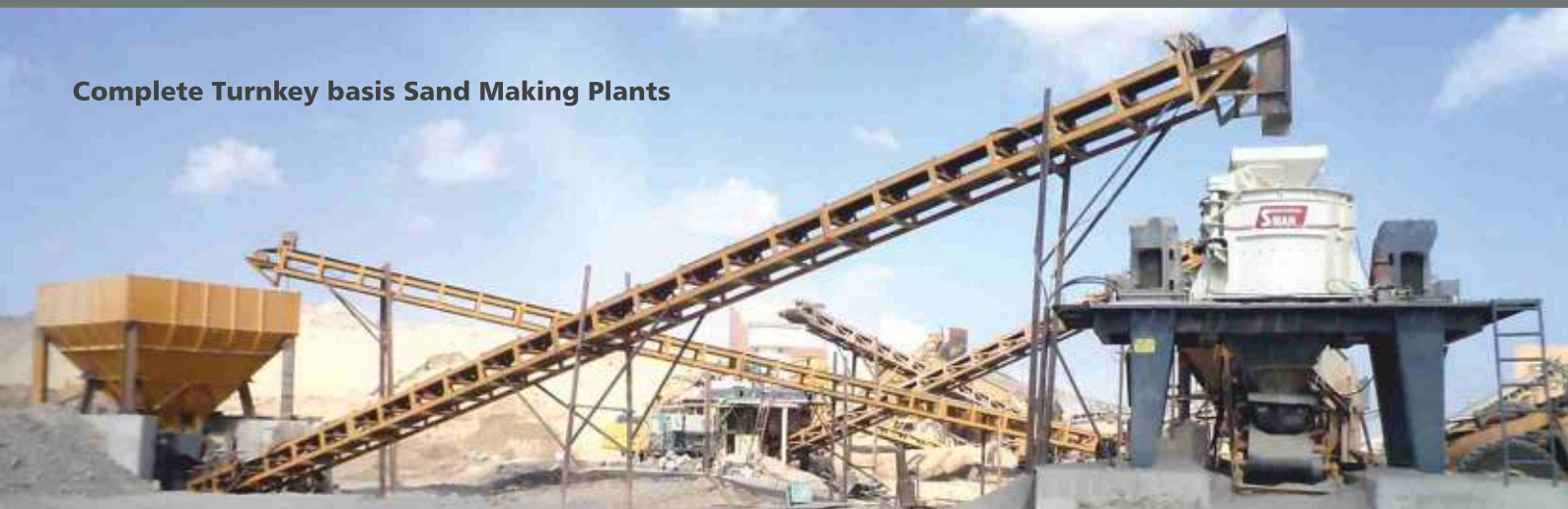


Rock on Rock Shell



Rock on Metal Shell

## Complete Turnkey basis Sand Making Plants





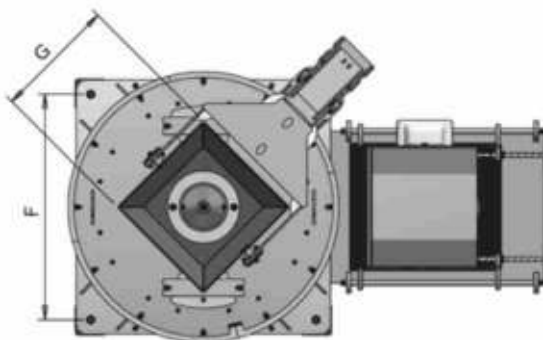
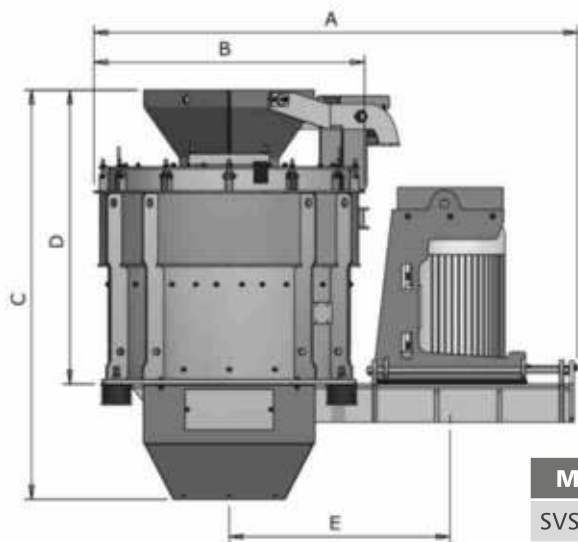


**Shaped Aggregates**



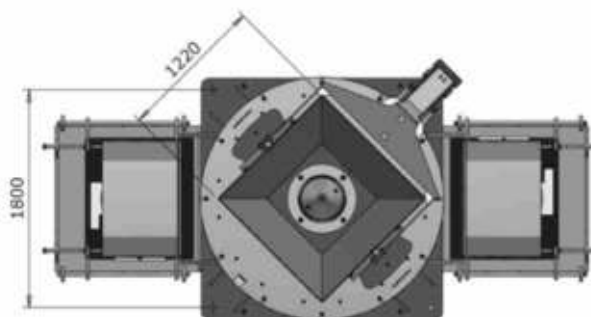
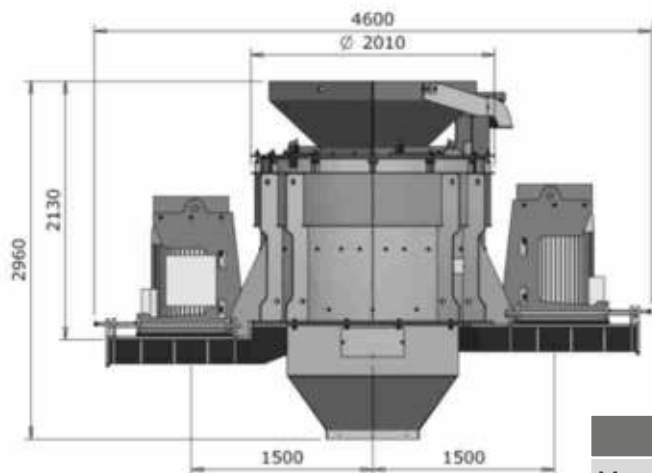
**Artificial Sand**

## Technical Specifications



Model	A	B	C	D	E	F	G
SVSI 50	2525	1390	1810	1405	1100	990x1220	470
SAVSI 50	2525	1390	1810	1405	1100	990x1220	470
SVSI 100	2845	1590	2410	1730	1300	1325	720
SAVSI 100	2845	1590	2410	1730	1300	1325	720

Model	SVSI 50	SAVSI 50	SVSI 100	SAVSI 100
Max size of feed (mm)	00-15	00-20	00 – 30	00 – 40
Rotor Size (mm)	600	600	800	800
Power (Kw/Hp)	37-45 KW/50-60 Hp	37-45 KW/50-60 Hp	90-110 Kw / 120-150 Hp	90-110 Kw / 120 – 150 Hp
Capacity (TPH)	20-50	30-70	70 - 100	100 – 150

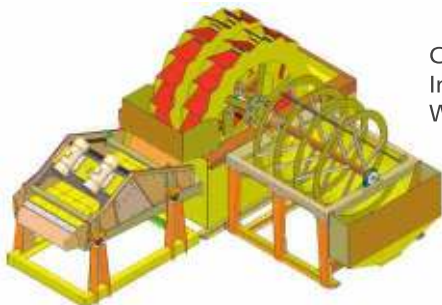


Model	SVSI 200	SAVSI 200
Max size of feed (mm)	00 – 40	00 – 60
Rotor Size (mm)	1000	1000
Power (Kw/Hp)	132 Kw x 2 / 180 Hp x 2	132 Kw x 2 / 180 Hp x 2
Capacity (TPH)	150 – 200	180 - 220

Capacities are indicative for materials with bulk density of 1.6 T/ Cu.Mtr. & 1500 rpm at machine.

Actual results may vary depending upon rock type, feed grading, feed rate, moisture etc

# VERTICAL SHAFT IMPACTOR



Compact Sand Making Plants for Instant Installation along with Washing & Dewatering Units.



## COMPANY PROFILE

Shakti Mining Equipments Private Limited Is a company engaged in manufacturing of mining and construction equipments in India. Today SMAN is a very much reputed brand in the construction & mining field Since 1986. SMAN brand products are giving outstanding performance at the site, with increased productivity and lowest operating cost. The company officers offer personal attention to each and every client right from understanding his needs and provides the correct products resulting in optimum performance with most economical solutions along with a very modern technology. The company strives to maintain a balance between advanced technology and cost effectiveness of the products. Our associates are more productive, effective and competent than their peers at other companies. We believe In the saying 'Satisfied associates are better associates'.

## QUALITY CONTROL

To achieve high standard and quality of product, a very reliable quality control system has been adopted by the company. All the raw materials are procured as per International standard of quality. During various production process such as machining, assembling, finishing etc., each and every part of the product is keenly and thoroughly inspected and Checked by Quality Control Department.

## MODERN MANUFACTURING FACILITIES



Since 1986

**Shakti** 

MINING EQUIPMENTS  
PVT. LTD.

## HEAD OFFICE & PLANT - I

### SHAKTI MINING EQUIPMENTS PVT. LTD.

W-140 to 143 (A), M.I.D.C. Industrial Area, Ambad, Nasik - 422 010, Maharashtra, India.

**Phone :** +91-253-2381041, 2382755 **Fax :** +91-253-2381040 **Mobile :** +91-9922949095

**Email :** sales@shaktimining.com **Website :** www.shaktimining.com

**PLANT-II :** D-128/129, M.I.D.C, Sinnar, Malegaon, Sinnar, Dist. Nasik – 422 113, Maharashtra, India.



Jaw Station



Cone Station



VSI



Screening Station

Since 1986  
**SMAN**

The Ultimate Crushing Solution